

*Small, light, safe and
simple to operate!*

MORCE **POWER PLUS**

The **new generation** of
electronic morcellators 2307

MORCE POWER PLUS

Electronic morcellator 2307

With the new development of the Morce Power Plus morcellation system, Richard Wolf has created the ideal conditions for simple, fast and safe morcellation of even large amounts of tissue.

The combination of light-weight construction and the maximum power of new micromotors of the latest generation using "brushless technology" make the system highly efficient and provide our clientele with the ideal alternative in the practical challenges of everyday hospital routine. Depending on the task in hand, dimensions of 12, 15 or 20 mm can be selected in the basic system. No special manual instruments are necessary, the usual 10 mm clawed grasping forceps or tenaculum forceps can be used. The microprocessor supported controller is installed in a small housing that is easy to integrate in existing supply units and it can be controlled by a footswitch.

The distal ends of the cutting tubes are made of top-quality, specially hardened stainless steel and guarantee a long working life. They are located in a trocar sleeve with automatic flap valve specially designed for the morcellator. This makes it possible to perform the dilatation for morcellation using the normal trocar sleeve technique or to introduce the preassembled morcellator directly via the incision in the abdominal cavity with the extended trocar rod. To avoid complications, during insertion, the sharp cutting edge can be turned in a proximal direction so that it lies protected in the trocar sleeve (CUT-NO-CUT function)

A sophisticated sealing system ensures that the pneumoperitoneum is maintained during all phases of morcellation. The "beak" at the distal tip of the trocar sleeve is an additional safety feature with two essential functions: to

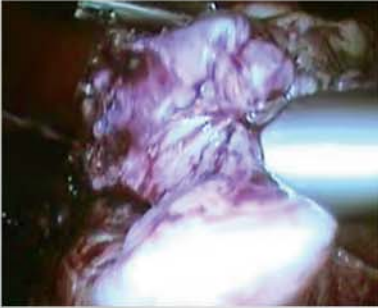
protect tissue during morcellation and to act as a tissue feeder allowing tissue to be cut off continuously.

This and a series of other innovative solutions as described below make the Morce Power Plus an extremely attractive morcellation system that can be operated incredibly simply and that is sure to meet your requirements.



Adapter

The sealing system can be fitted using adapters and provides the convenience of an automatic trocar sleeve.



Tissue morcellation with the Morce Power Plus

Intelligent sealing system for hermetic sealing of both tissue and instrument during the entire morcellation procedure allows the use of standard 10 mm manual instruments.



Controller

- ❑ Small, compact and lightweight device (120 x 180 x 110 mm)
- ❑ Clear controls with LED display
- ❑ Variable speed 100 - 1000 rpm
- ❑ Direction of rotation reversible (clockwise and anti-clockwise)
- ❑ Controlled by footswitch with start-up lock to prevent accidental activation



Trocar sleeve

Trocar sleeve for all three Morce Power Plus variants (12, 15, 20 mm) with flap valve, distal "beak" to protect tissue and to support feed-in of the tissue during morcellation.



NO CUT

Cutting edge retracted in the trocar sleeve by turning the morcellator housing



AUTOCLAVE
134° C / 273° F

CUT

Cutting surface with optimum cutting properties is turned to advance it in a distal direction. The beak of the trocar sleeve supports the stripping function when feeding tissue into the morcellator and also protects the tissue below it.

Handpiece

Optional, ergonomic handpiece for a comfortable hand position

MORCE POWER PLUS

Complete system

12 mm complete system

comprising:

Control unit 230 V / 115 V / 100 V, **foot-switch**, **micromotor**, **morcellator handpiece**, sealing unit complete with tissue and instrument seal Ø 12 / 15 mm, trocar sleeve 12 mm, morcellator tube 12 mm, trocar 12 mm**23070012**

Control unit 230 V / 100 V / 115 V

for Morce Power Plus 100-1000 rpm, clockwise or anticlockwise
120 x 180 x 110 mm.....**2307101**

Footswitch (ON/OFF) IP 68 for

Morce Power Plus**2307102**

Electronic motor for control unit

230 V / 115 V / 100 V.....**80951.0002**

Morcellator handpiece

for Morce Power Plus**8307011**

Sealing unit complete with tissue and instrument seal for 12 mm

Morce Power Plus**83075011**

Trocar sleeve 12 mm with automatic

flap valve and tissue positioner ..**8307112**

Morcellator cutting tube 12 mm ..**8307012**

Trocar long 12 mm**83071121**

15 mm complete system

comprising:

Control unit 230 V / 115 V / 100 V, **foot-switch**, **micromotor**, **morcellator handpiece**, sealing unit complete with tissue and instrument seal Ø 12 / 15 mm, trocar sleeve 15 mm, morcellator tube 15 mm, trocar 15 mm**23070015**

Control unit 230 V / 100 V / 115 V

for Morce Power Plus 100-1000 rpm, clockwise or anticlockwise
120 x 180 x 110 mm.....**2307101**

Footswitch (ON/OFF) IP 68 for

Morce Power Plus**2307102**

Electronic motor for control unit

230 V / 115 V / 100 V.....**80951.0002**

Morcellator handpiece

for Morce Power Plus**8307011**

Sealing unit complete with tissue and instrument seal for 15 mm

Morce Power Plus**83075011**

Trocar sleeve 15 mm with automatic

flap valve and tissue positioner ..**8307115**

Morcellator cutting tube 15 mm ..**8307015**

Trocar long 15 mm**83071151**

20 mm complete system

comprising:

Control unit 230 V / 115 V / 100 V, **foot-switch**, **micromotor**, **morcellator handpiece**, sealing unit complete with tissue and instrument seal Ø 12 / 15 mm, trocar sleeve 20 mm, morcellator tube 20 mm, trocar 20 mm**23070020**

Control unit 230 V / 100 V / 115 V

for Morce Power Plus 100-1000 rpm, clockwise or anticlockwise
120 x 180 x 110 mm.....**2307101**

Footswitch (ON/OFF) IP 68 for

Morce Power Plus**2307102**

Electronic motor for control unit

230 V / 115 V / 100 V.....**80951.0002**

Morcellator handpiece

for Morce Power Plus**8307011**

Sealing unit complete with tissue and instrument seal for 20 mm

Morce Power Plus**83075021**

Trocar sleeve 20 mm with automatic

flap valve and tissue positioner ..**8307120**

Morcellator cutting tube 20 mm....**8307020**

Trocar long 20 mm**83071201**



Accessories

MORCE POWER PLUS complete system for 12 mm, 15 mm and 20 mm



Optional accessories:

- Ergonomic handle**
for morcellator handpiece.....**83070111**
- Adapter**
for trocar sleeve 12, 15 mm**8307501**
- Tissue seal**, black for 12, 15 mm
Morce Power Plus,
pack of 10 **8307502**
- Tissue seal**, black for 20 mm
Morce Power Plus,
pack of 10**83075022**
- Instrument seal** for 12, 15 und 20 mm
Morce Power Plus,
pack of 10**8307503**
- Trocar short**, for trocar sleeve
12 mm**83071122**
- Trocar short**, for trocar sleeve
15 mm**83071152**
- Trocar short**, for trocar sleeve
20 mm**83071202**

- Cleaning spray**
500 ml**40900.1000**
- Spray attachment**
for clean spray, for cleaning
the handpieces**40900.1201**
- Spray attachment**
for clean spray, for cleaning
the micromotor**40900.1202**

Manual instruments

- Clawed grasping forceps** both jaws opening,
Ø 10 mm, WL 310 mm,
modular system, complete**8395.486**
- Clawed grasping forceps**
both jaws opening,
Ø 10 mm, WL 300 mm**8385.181**
- Grasping forceps** 2/3 claws
Ø 10 mm, WL 310 mm,
Modular system, complete**8395.2042**
- Myoma screw**
Ø 10 mm, WL 330 mm**8385.301**

Endoscopic fascia closure



- Sealing cone**
10 - 12 mm**8934.915**
12 - 15 mm**8943.915**
15 - 20 mm**8945.915**
- Needle forceps**
with active suture holder
Ø 2 mm, WL 160 mm,
with irrigation tap**8756.201**

RIWO SYSTEM TRAY 60 mm high,
Instrument container with inserted peg mats,
lid with fixed peg mats,
inner dimensions
(W x D): 500 x 200 mm**38201.586**

